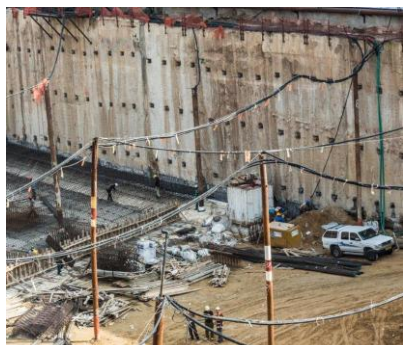


Durglass® temporary active anchors



Active anchors composed of single or multiple **Durglass®** bars are used for temporary works where pre-tensioning the anchorage is necessary.

Durglass® products do not need to be removed from the ground, since they can be easily excavated through during works at a later stage.

DURGLASS® AND GLASSPREE® SPECIFICATIONS*

Density	ASTM D792	1.95 g/cm ³
Ultimate tensile strength	ASTM D7205	760 – 1000 MPa
Tensile modulus of elasticità	ASTM D7205	40-46 GPa
Shear strength	ASTM D7617	100 – 200 MPa
Fiber content	ASTM D2584	>65%

* Based on ASTM International's testing method.

DURGLASS® REBAR ACTIVE ANCHORS

Anchor type	Bar diameter mm	Active working load kN	Bar length
AA 75	16	75	Up to 24 m
AA 120	20	120	Up to 24 m
AA 180	25	180	Up to 24 m
AA 240	32	240	Up to 24 m



DURGLASS® MULTIPLE-STRAND ACTIVE ANCHORS

Anchor type	Bars	Active working load – kN	Bar length
AA 150	n°1 40x9	150	No limits
AA 300	n°2 40x9	300	No limits
AA 450	n°3 40x9	450	No limits
AA 600	n°14 x Ø 12 mm	600	No limits
AA 800	n°8 40x9	730	No limits

